



Rosy VIEW

Pinks and reds star in a striking quilt.

DESIGNER **Annette Plog** MACHINE QUILTER **Sheri A. Mecom**
PHOTOGRAPHER **Jason Donnelly**



FINISHED QUILT:
56½×72½"

FINISHED BLOCK:
8" square

Yardages and cutting instructions are based on 42" of usable fabric width.

- 8—½-yard pieces assorted cream and beige prints (blocks)
- 8—⅝-yard pieces assorted pink and red prints (blocks)
- ⅝ yard pink leaf print (binding)
- 3⅝ yards backing fabric
- 65×81" batting

CUT FABRICS

Cut pieces in the following order.

Designer Annette Plog prefers to make triangle-squares larger than necessary and trim them to size. To use this method, cut 3" squares instead of the 2⅞" squares listed here.

From each cream and beige print, cut:

- 32—2⅞" squares
- 16—2½" squares

From each pink and red print, cut:

- 8—4½" squares
- 32—2⅞" squares
- 16—2½" squares

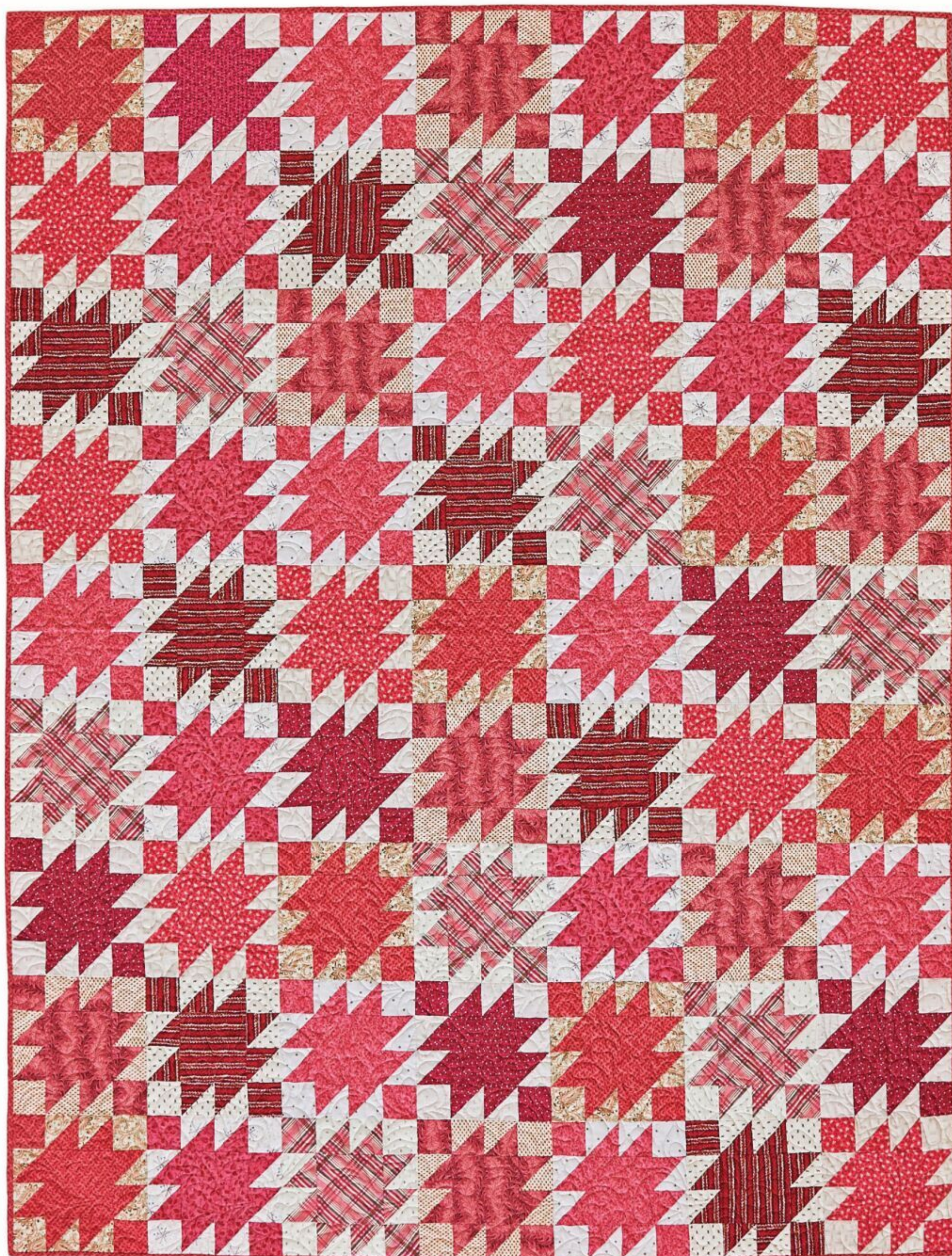
From pink leaf print, cut:

- 7—2½×42" binding strips

ASSEMBLE BLOCKS

Measurements include ¼" seam allowances. Sew with right sides together unless otherwise stated.

Press seams in directions indicated by arrows on diagrams. If no direction is specified, press seam toward darker fabric.



1. Gather all pieces from one cream or beige print (thirty-two 2⅞" squares and sixteen 2½" squares) and all pieces from one pink or red print (eight 4½" squares, thirty-two 2⅞" squares, and sixteen 2½" squares).

2. Use a pencil to mark a diagonal line on wrong side of each cream or beige print 2⅞" square.

3. Layer a marked cream or beige print square atop a pink or red print 2⅞" square. Sew together with two

seams, stitching ¼" on each side of marked line (**Diagram 1**). Cut apart on marked line. Press open to make two triangle-squares. Each triangle-square should be 2½" square including seam allowances. Repeat to make 64 triangle-squares total.

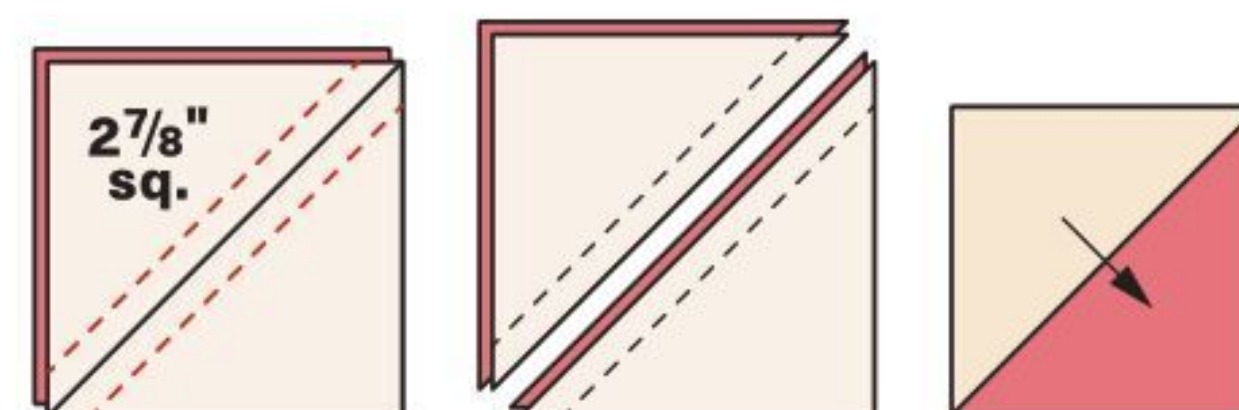


Diagram 1



Annette Plog

HOW IT STARTED

Lost at Sea was the first quilt I had published in *American Patchwork & Quilting*® magazine. I was so excited and honored. I was working at a local quilt shop then, and the shop offered kits for the project. I remember cutting and folding fabric for the kits at home in front of our fireplace during a power outage caused by an ice storm.

ANNETTE'S PROJECTS OF CLASSIC BLOCKS IN SCRAPPY COLOR PALETTES APPEAL TO TRADITIONAL QUILTERS. THIS IS HER EIGHTH QUILT TO BE PUBLISHED IN OUR MAGAZINE.

annetteplogquilts.com

30 Years Ago

When this magazine first published, my family was young and I was working part-time at a local fabric shop. I had completed my first quilt—a pink and blue Lone Star—so my quilt journey was just beginning. I started quilting to make quilts to decorate our new home.

traditional and scrappy quilts. What has changed are the projects I choose. They have become more challenging as I improve at my craft. Lately I have really enjoyed dipping my toe into the modern quilt movement. I also love hand piecing.

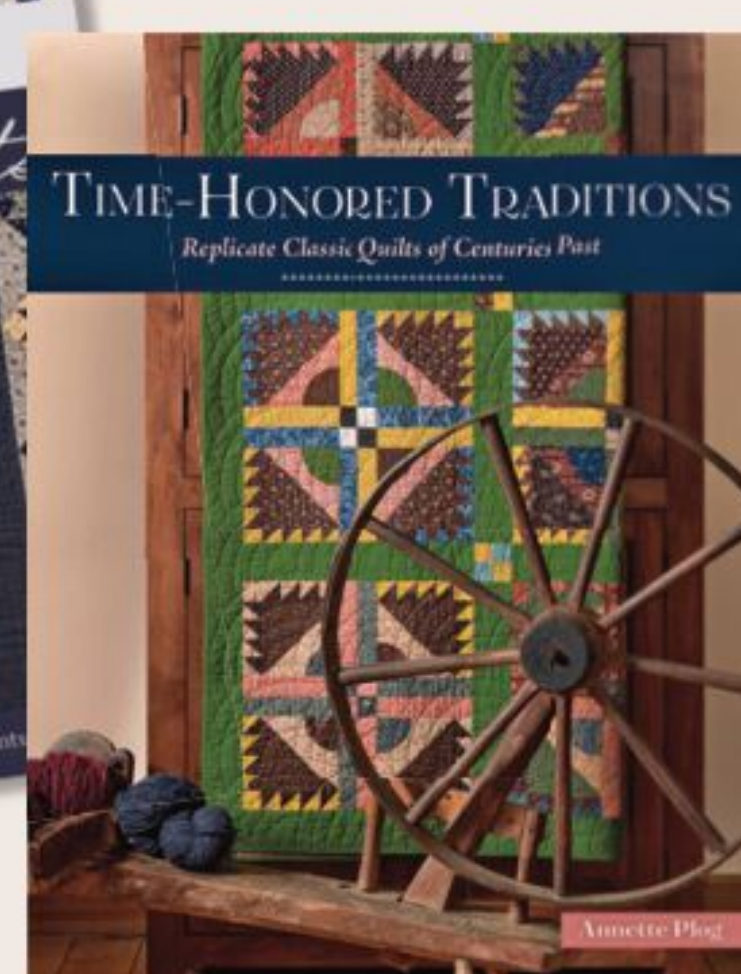
Style Evolution

I don't think my style has changed much in 30 years. I still love

Proudest Quilting Moment

I am most proud of becoming a fabric designer for Windham Fabrics. My first line, *Petite Perennials*, left, features small prints in traditional colors such as cheddar, indigo, and poison green.

I also have authored two quilting books, left, *True Blue Quilts* (2017; ctpub.com) and *Time-Honored Traditions*, (2021; fatquartershop.com).



THROUGHOUT THE YEARS

2013
DECEMBER



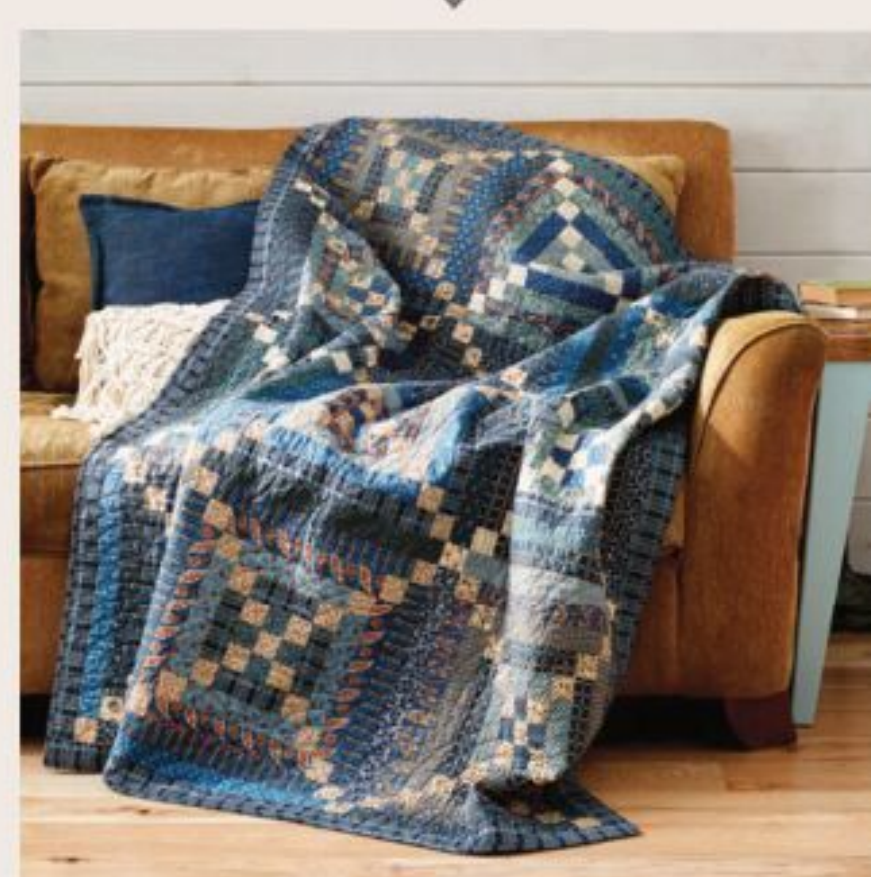
Lost at Sea

2016
JUNE



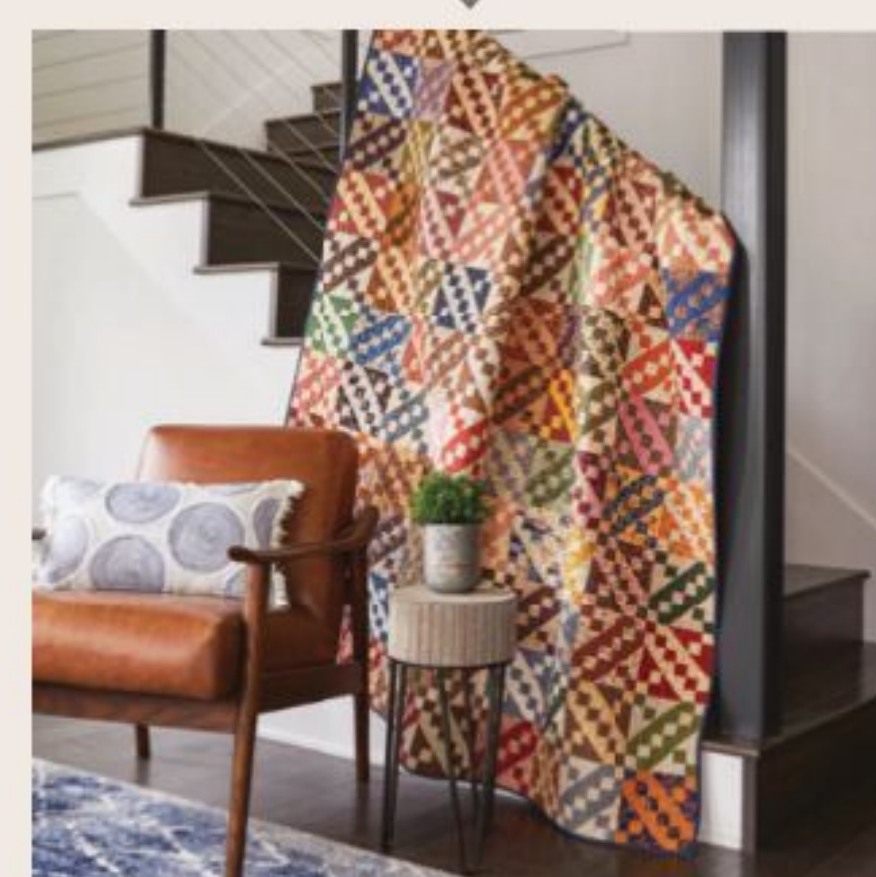
True to Tradition

2018
AUGUST



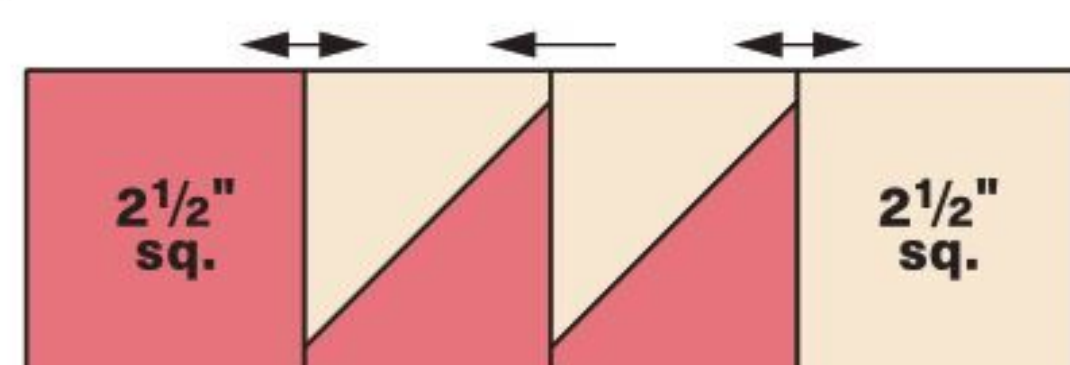
Scrappy Blues

2019
DECEMBER



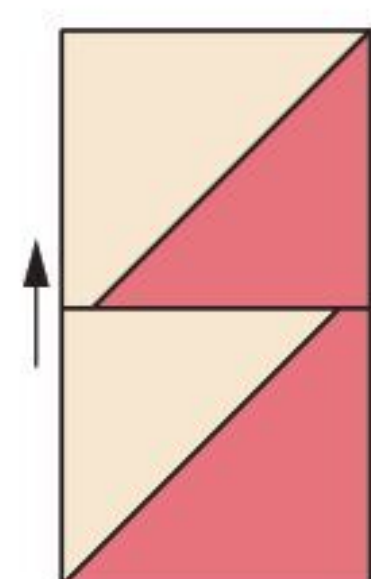
Make a Trade

4. Referring to **Diagram 2** for orientation of triangle-squares, sew together one pink or red print $2\frac{1}{2}$ " square, two triangle-squares, and one cream or beige print $2\frac{1}{2}$ " square to make Unit A. The unit should be $2\frac{1}{2} \times 8\frac{1}{2}$ " including seam allowances. Repeat to make 16 A units total.



Unit A
Diagram 2

5. Referring to **Diagram 3**, sew together two triangle-squares to make Unit B. The unit should be $2\frac{1}{2} \times 4\frac{1}{2}$ " including seam allowances. Repeat to make 16 B units total.



Unit B
Diagram 3

6. Referring to **Diagram 4** for orientation of A and B units, lay out two A units, two B units, and one pink or red print $4\frac{1}{2}$ " square in three rows. Sew together pieces in middle row. Join rows to make a block. The block should be $8\frac{1}{2}$ " square including seam allowances. Repeat to make eight matching blocks total.

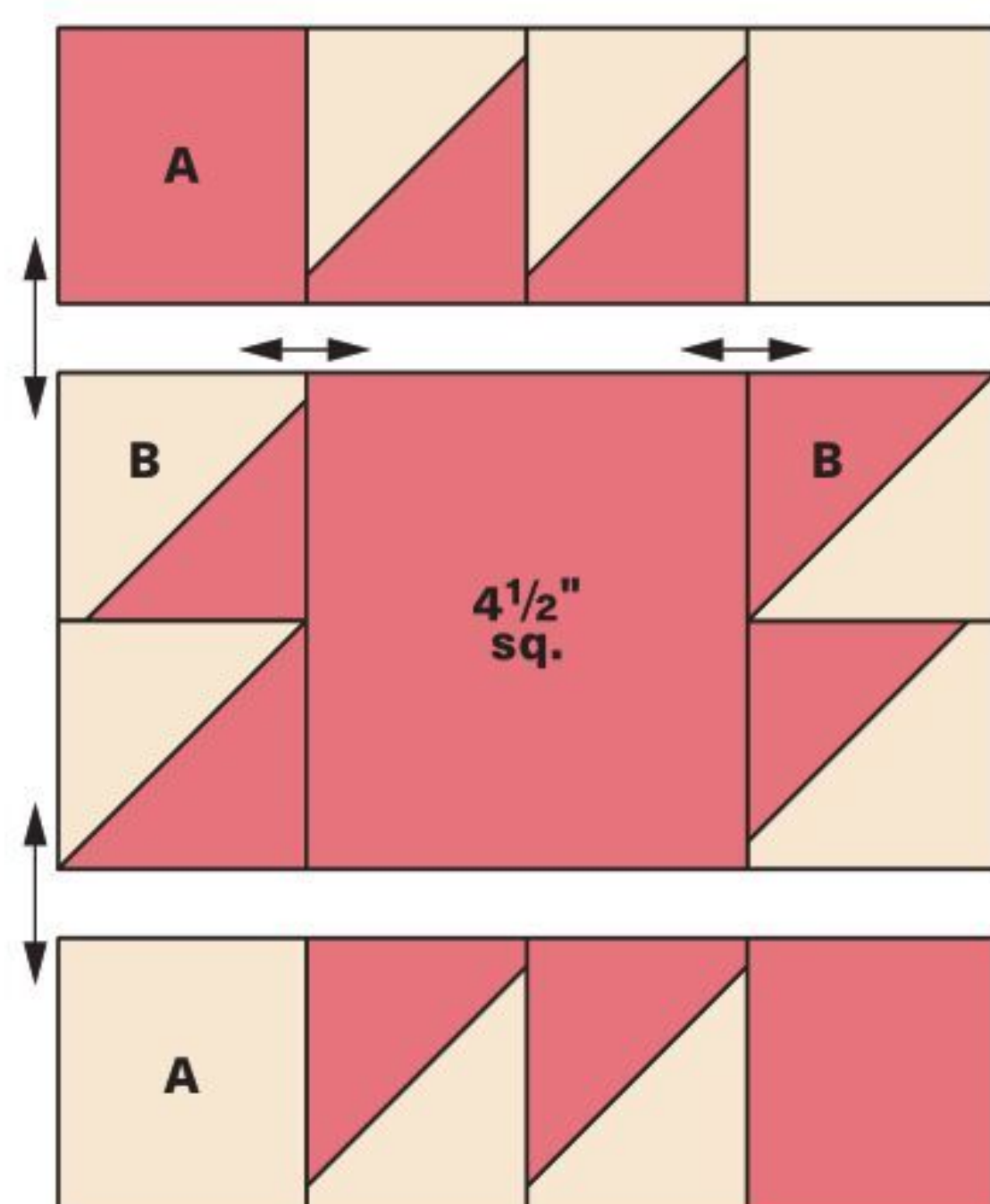


Diagram 4

7. Repeat steps 1-6 to make 64 blocks total (eight sets of eight matching blocks).

ASSEMBLE QUILT TOP

1. Referring to **Quilt Assembly Diagram**, lay out 63 blocks in nine rows. (You will have one block left over.) Sew together blocks in rows. Press seams in one direction, alternating direction with each row.

2. Join rows to complete quilt top. Press seams in one direction.

FINISH QUILT

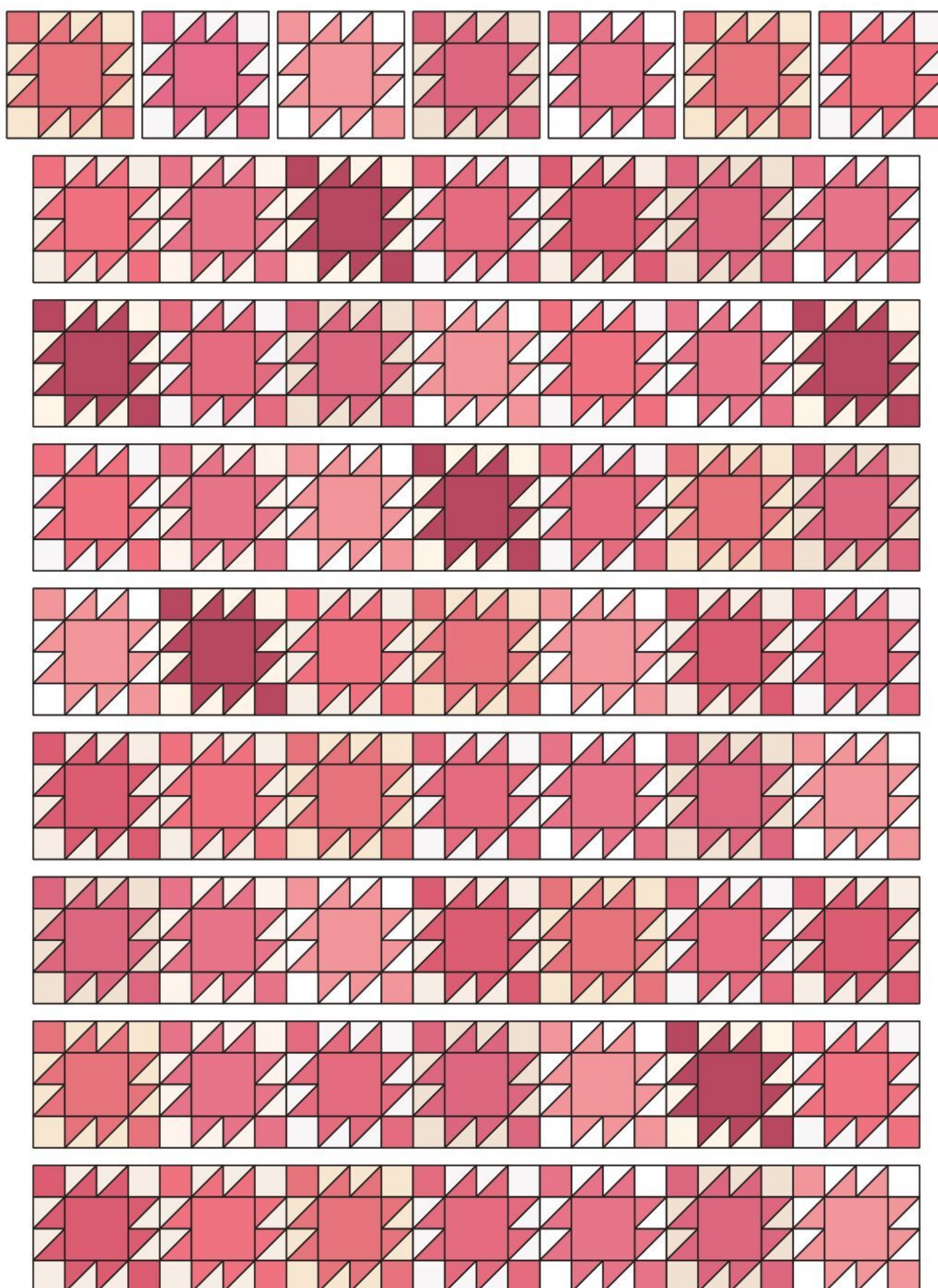
1. Layer quilt top, batting, and backing; baste. (For details, see Complete Quilt, *Pattern Sheet 3*.)

2. Quilt as desired. Sheri A. Mecom machine-quilted a curving feather design across the quilt top.

3. Bind with pink leaf print binding strips. (For details, see Complete Quilt.)

DESIGNER: Annette Plog (annetteplogquilts.com)

MACHINE QUILTER: Sheri A. Mecom (leaveittomequilting.com)



Quilt Assembly Diagram